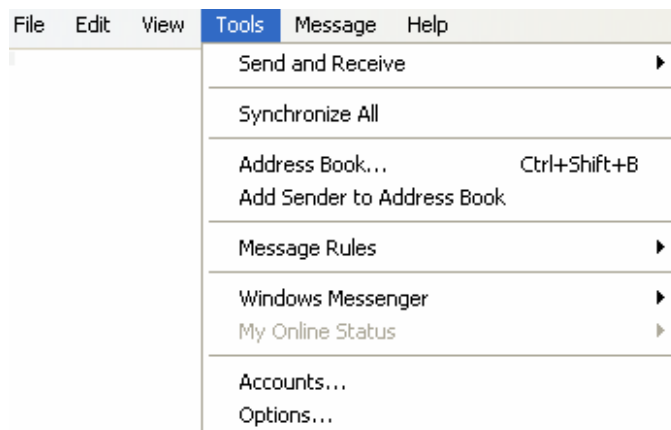


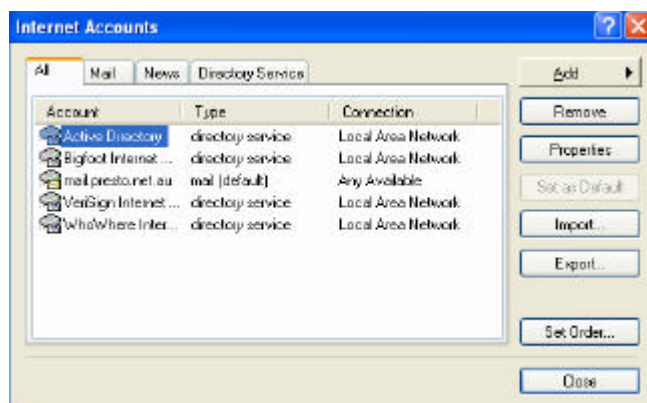
# SETTINGS IN OUTLOOK EXPRESS FOR PRESTO INTERNET



To setup an email account in Outlook Express, you select **Tools** from the top menu.



Then **Accounts**



Then **Mail**

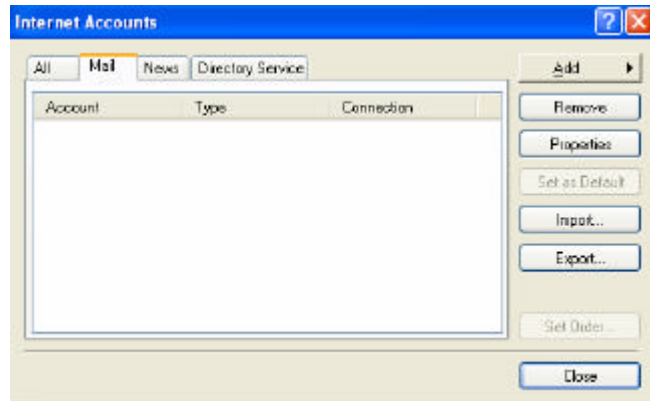
## SETTINGS IN OUTLOOK EXPRESS FOR PRESTO INTERNET

You should see the Mail accounts as shown here.

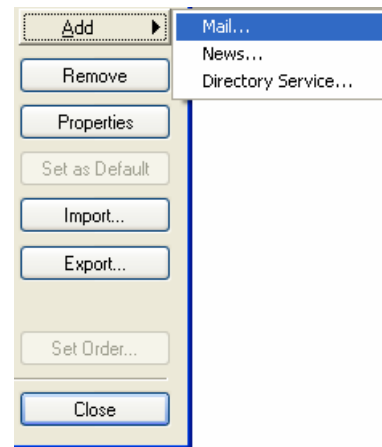
If there is an existing entry you can update it, or select it then delete it and add a new account.

You can have multiple accounts created for dial up or broadband.

We will add a Presto user account here.



Click on **Add** then **Mail**



There are only a few properties to change on the setup mail account screens.

The reference name for the Account is asked for first – such as “Presto Dial Up Account”

Presto User details are then asked for

Name = Name you would like displayed

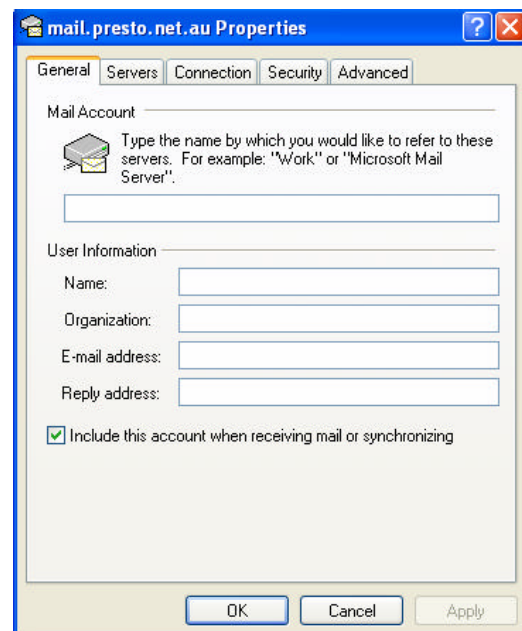
Organization = Company Name

E-mail address = [username@presto.net.au](mailto:username@presto.net.au)

Reply Address =

Note: Only enter a reply address if it differs from your email address otherwise leave it blank.

The check box indicates whether Outlook Express checks for Incoming mail on this account. Unchecked means you can send but not receive mail.



## SETTINGS IN OUTLOOK EXPRESS FOR PRESTO INTERNET

The next tab at the top of this dialog is shown here (**Servers**).

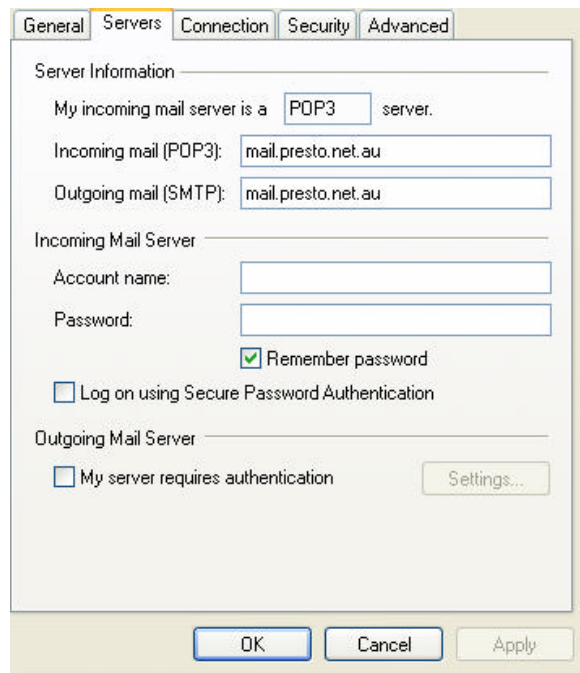
You don't need to click on OK until all properties are entered.

Incoming Mail = mail.presto.net.au  
Outgoing Mail = mail.presto.net.au

Incoming Mail Server  
Account Name = Presto Username  
Password =

Note: Upper case and Lower case are distinctly different. "Fred" is not the same as "fred".

Make sure the CAPS Lock key is not on when entering your password entry as you cannot see the characters typed (only '\*' are displayed for the characters you type). If your password has capitals use the Shift button for the capital letters ensuring the others are lower case.



Check the "Remember password" box so that you don't have to keep typing it in every time the mail is checked.

Nothing else needs to be changed on this dialog or the other tabs.

Click on OK to finish and save your entry.

You should now be able to access your emails from Presto with Outlook Express.

To dial up and access Presto refer to "Setting up dial up Access to Presto".

To make changes or check your settings. Simply select **Tools** / **Accounts** / **Mail** then click on your Account entry then **Properties**.

Produced by Presto Support  
July 2005